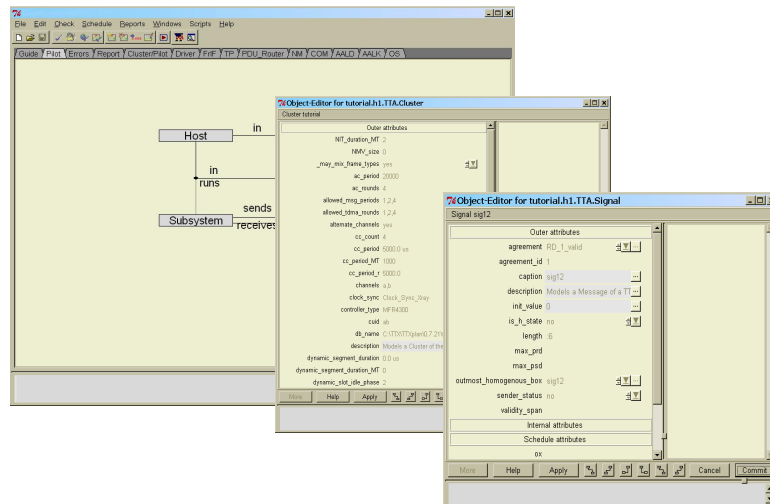


Tool-Based Configuration for AUTOSAR Standard Software



TTX Build – The Modular Configuration Tool for AUTOSAR Components

Optimized Node Design for Distributed Automotive Systems

TTX Build enables production-strength development of ECUs (Electronic Control Units) that conform to the Automotive Open System Architecture (AUTOSAR) standard. It supports optimized node design and configuration of automotive systems based on the AUTOSAR specifications for the FlexRay™ stack, and includes highly effective convenience functions and extensive consistency checks. It significantly speeds up engineering and increases product quality.

Production-Strength AUTOSAR Configuration Tool

TTX Build can automatically generate the complete software stack in one step; the process includes the automatic calculation of optimized AUTOSAR allocation parameters. This avoids configuration errors and ensures valid AUTOSAR configurations. In addition, TTX Build enables integration of the AUTOSAR communication platform with production-strength development processes, and therefore reduces the costs of migration to AUTOSAR.

TTX Build provides a graphical user interface for entering and changing node configuration data. For process integration, TTX Build provides batch mode execution and complete node configuration via scripting. In addition, it substantially simplifies configuration of the TTTech Automotive AUTOSAR FlexRay stack and supports the import of communication databases that conform to the Field Bus Exchange (FIBEX) standard. TTX Build also checks for consistency with the FIBEX communication database. TTX Build supports FIBEX 1.2 and FIBEX 2.0.1.

TTX Build is a scalable tool that efficiently adapts to customer requirements. It uses plug-ins to attach compatible configuration modules for future AUTOSAR components, within the same tool environment. Individual configuration generators, such as the FlexRay driver and the FlexRay interface, are available as plug-ins to TTX Build.

AUTOSAR Configuration Generators

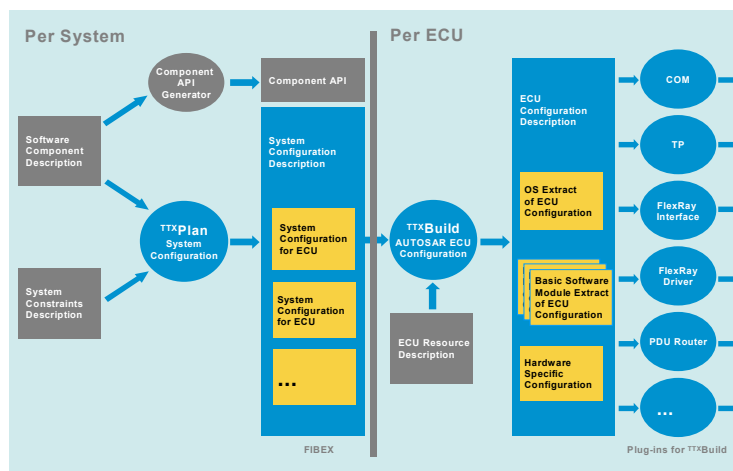
TTX^{Build} AUTOSAR configuration generators for automatic generation of configuration data are available for the following TTTech Automotive AUTOSAR components:

- AUTOSAR FlexRay Driver configuration
Enables automatic generation of configuration data for TTTech Automotive's resource-efficient AUTOSAR FlexRay driver. The generated data comply with the AUTOSAR specification stack. Driver configurations depend on the communication controller. They are currently available for the Freescale MFR4310 and Infineon CIC310 controllers.
- AUTOSAR FlexRay Interface configuration
Simplifies the configuration of a consistent AUTOSAR FlexRay interface
- AUTOSAR FlexRay TP configuration
Generates optimized configuration data for the AUTOSAR Transport Protocol
- AUTOSAR PDU Router configuration
Supports automatic configuration of the PDU router that handles the routing of PDUs between the frames on the network and the software modules in the ECU
- AUTOSAR COM-Layer configuration
Enables the configuration of the COM-Layer and supports synchronous or asynchronous operation of the COM-Layer in the FlexRay network environment

Further optional AUTOSAR generators can be plugged in to TTX^{Build} and are available on request:

- AUTOSAR NM configuration
- AUTOSAR UDS (Universal Diagnosis System) configuration
- Generation of OIL file for tasks required to run the FlexRay stack in the context of an OSEK OS
- Support for applications that use XCP

Development Process and Tools for FlexRay and AUTOSAR



For further information, including price and availability, contact products@tttech-automotive.com

FlexRay is a registered trademark of Daimler AG. TTX-Build is a product name of TTTech Automotive GmbH. All other trademarks are the property of their respective holders. To the extent possible under applicable law TTTech Automotive hereby disclaims any and all liability for the content and use of this product flyer.